

DIRECTIONS

Syracuse Chargers Rowing Club Boathouse

From the NYS Thruway take Exit #38. Take a left at light then travel about 1-2 miles. Look for Long Branch Road on left (3rd traffic light). Take left onto Long Branch Road. At next light, buses and team tent vehicles turn right onto Route 370. Spectators and boat trailers go straight through intersection and continue on Long Branch Road.

SPECTATORS:

Spectators must park in the spectator parking lot over the bridge on Long Branch Road. No spectator vehicles will be allowed in the boathouse area or bus parking lot. Park Rangers will strictly enforce this rule.

BUSES / TEAM TENT VEHICLES:

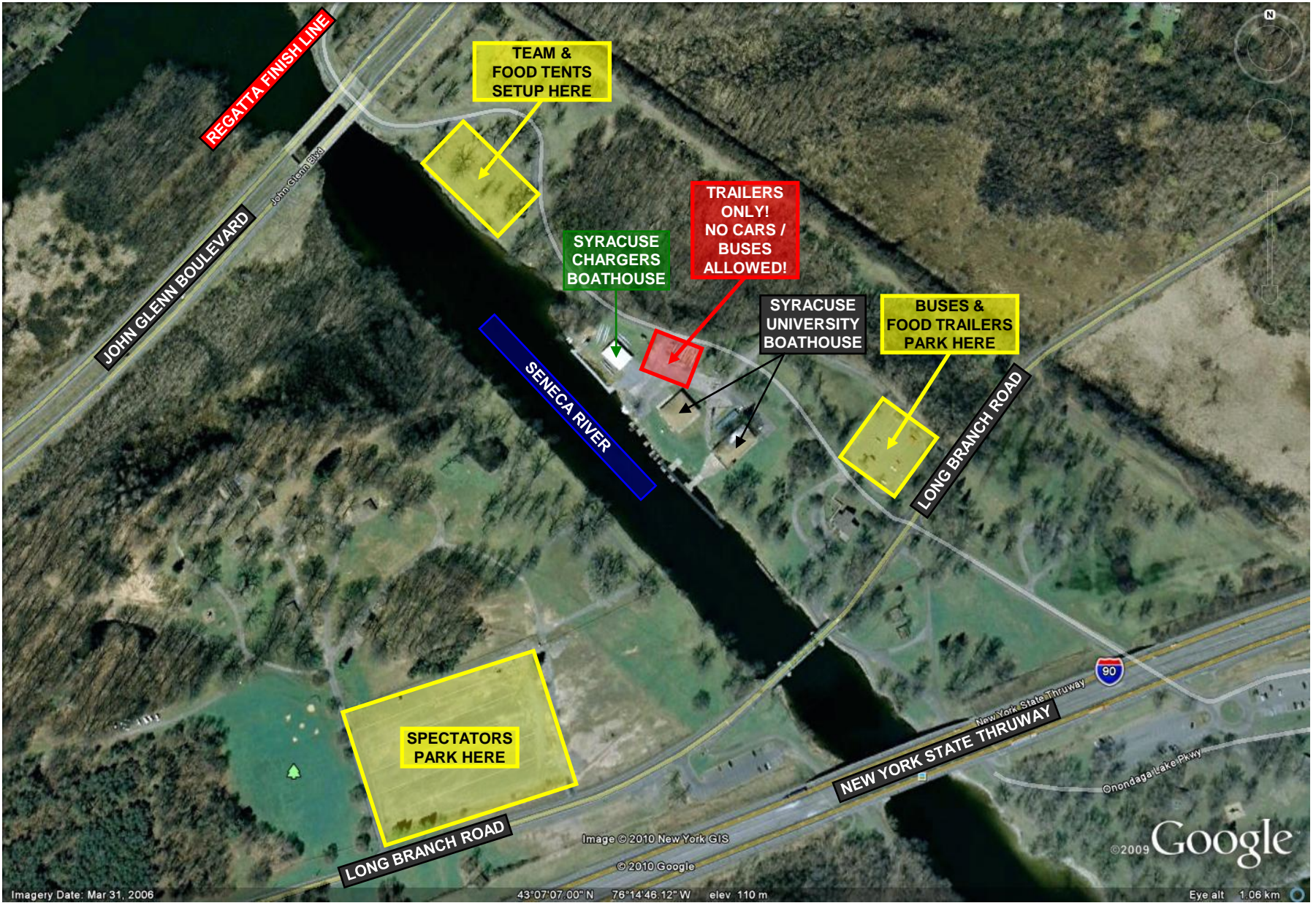
From directions above, continue along Route 370 for about 1 mile crossing through the John Glenn Boulevard intersection. Take the next left into the park entrance. Follow the park road about 1 mile to the boathouse area. Buses must drop kids off at boathouse then proceed to designated parking lot (see aerial photo maps). Each team will be allowed **TWO** team vehicles to gain access to the Team Tent area. Your team vehicles will be checked in and any additional vehicles beyond your allowed two will be turned away. Please park team tent vehicles in parking lots along park road. DO NOT PARK ON THE GRASS.

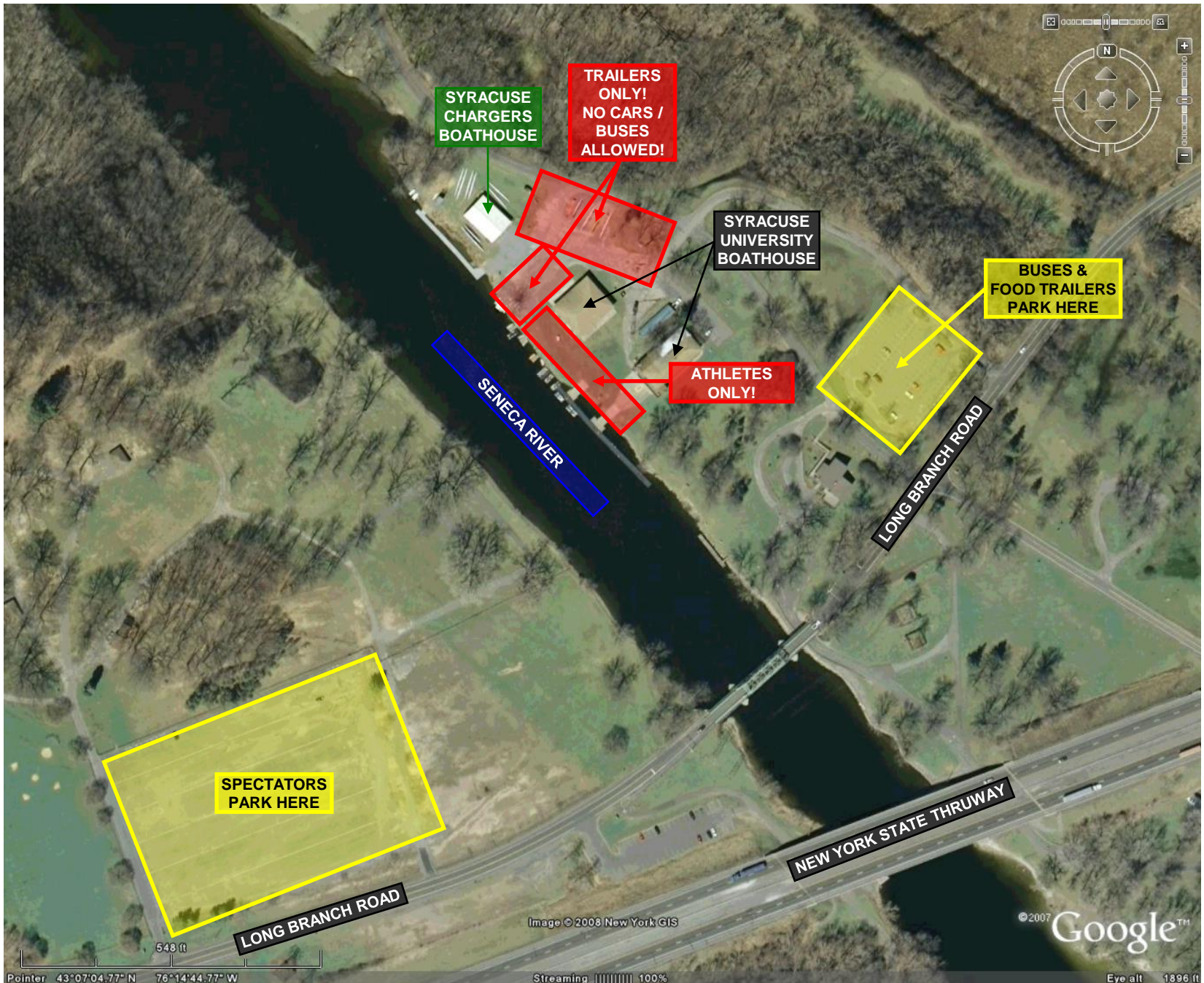
BOAT TRAILERS:

Boat trailers must take Long Branch Road to the boathouse area. Drivers will be instructed to turn right onto Ten Eyck Road to park. A parking attendant will be there to assist you. Please plan on arriving early to avoid congestion.

COACHES:

Each team will be allowed one (1) coaches vehicle (in addition to tow vehicles) in the bus parking lot.





SYRACUSE CHARGERS BOATHOUSE

TRAILERS ONLY!
NO CARS / BUSES ALLOWED!

SYRACUSE UNIVERSITY BOATHOUSE

BUSES & FOOD TRAILERS PARK HERE

ATHLETES ONLY!

SENECA RIVER

LONG BRANCH ROAD

SPECTATORS PARK HERE

NEW YORK STATE THRUWAY

LONG BRANCH ROAD



SYRACUSE CHARGERS BOATHOUSE

**TRAILERS ONLY!
NO CARS /
BUSES
ALLOWED!**

SYRACUSE UNIVERSITY BOATHOUSE

ATHLETES ONLY!

**BUSES &
FOOD
TRAILERS
PARK
HERE**

SENECA RIVER

LONG BRANCH ROAD

